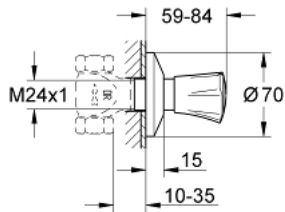


## 19 854 001 COSTA L CONCEALED VALVE EXPOSED PART

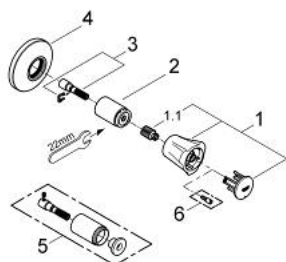


### PRODUCT DESCRIPTION

- Colour: chrome
- for concealed valves, 1/2", 3/4", 1"
- installation depth adjustable
- 10 - 35 mm
- metal handle
- heat-insulated
- marking: blue
- escutcheon
- GROHE Long-Life finish



## 19 854 001 COSTA L CONCEALED VALVE EXPOSED PART



### SPARE PARTS, มิถุนายน 2007 – now

1: Handle (Order-nr. 45994000)

1.1: Repl. kit f.handle fastening (Order-nr. 0538600M)

2: Sleeve (Order-nr. 06688000)

3: Extension (Order-nr. 45201000)

3.1: Safety clip (Order-nr. 0256900M)

4: Escutcheon (Order-nr. 06386000)

5: Extension for volume control (Order-nr. 45565000)\*

6: Screw for Costa/Avina products (Order-nr. 48013000)\*

\* Optional accessories