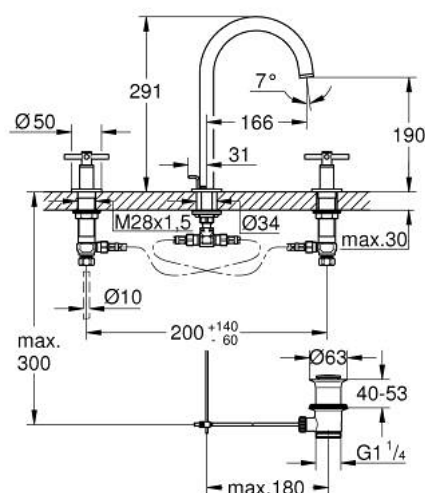


## 20 643 AL0 ATRIO 3-HOLE BASIN MIXER L-SIZE

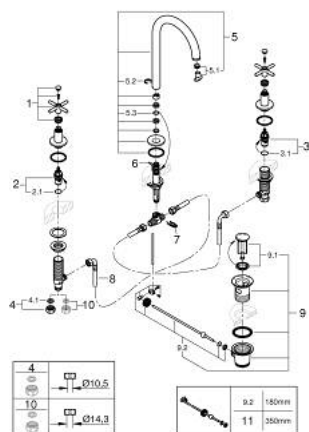


### PRODUCT DESCRIPTION

- Colour: brushed hard graphite
- ceramic headparts 1/2", 90°
- GROHE Long-Life finish
- GROHE Water Saving - Less water, perfect flow
- maximum flow rate (at 3 bar): 5 l/min
- swivelling tubular spout with Mousseur and stop limiter
- adjustable swivel area 0° / 150° / 360°
- pop-up waste set 1 1/4"
- pressure-proof, flexible connection hoses between spout and side valves
- with cross handles
- Two different sets of caps included. One set with "H" and "C" marking, one set without marking.



## 20 643 AL0 ATRIO 3-HOLE BASIN MIXER L-SIZE



### SPARE PARTS. ตุลาคม 2021 – now

- 1: Cross handles (Order-nr. 14215AL0)
  - 2: Ceramic headpart, 1/2" (Order-nr. 45882000)
  - 2.1: O-ring  $\phi 18.2 \times \phi 1.7$  (Order-nr. 0392400M)
  - 3: Ceramic headpart, 1/2" (Order-nr. 45883000)
  - 3.1: O-ring  $\phi 18.2 \times \phi 1.7$  (Order-nr. 0392400M)
  - 4: Coupling nut 1/2" x 10.5 mm (Order-nr. 1290100M)
  - 4.1: Fibre seal dia. 12x2 mm (Order-nr. 0138900M)
  - 5: Spout (Order-nr. 101298AL00)
  - 5.1: Flow straightener (Order-nr. 48408000)
  - 5.2: Safety ring (Order-nr. 4826600M)
  - 5.3: Sealing washer (Order-nr. 0128500M)
  - 6: Pop-up rod (Order-nr. 65196AL0)
  - 7: Fixing clamp (Order-nr. 6554100M)
  - 8: Flexible connection hose (Order-nr. 45704000)
  - 9: Pop-up waste set 1 1/4" (Order-nr. 28910AL0)
  - 9.1: Plug (Order-nr. 07182AL0)
  - 9.2: Eccentric rod (Order-nr. 07052000)
  - 10: Coupling nut 1/2" x 14.5 mm (Order-nr. 1290200M)\*
  - 11: Eccentric rod (Order-nr. 07341000)\*
- \* Optional accessories