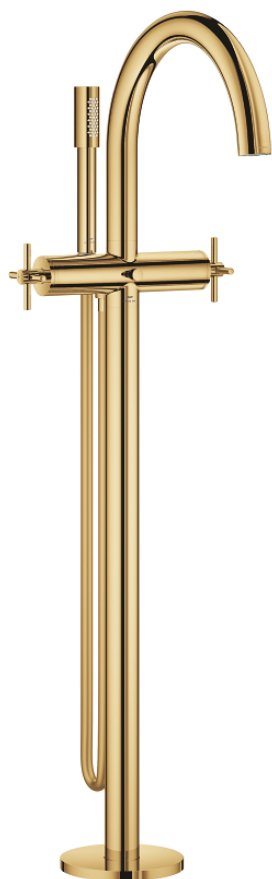
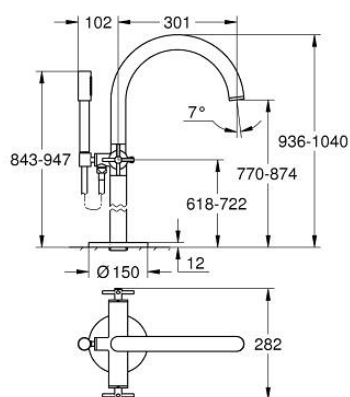


25 272 GL0 ATRIO BATH/SHOWER MIXER

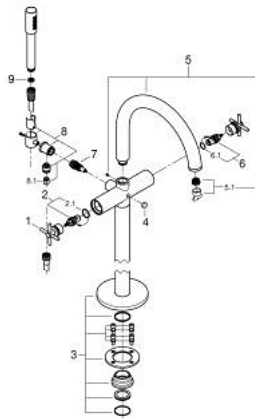


PRODUCT DESCRIPTION

- Colour: cool sunrise
- floor-mounted installation with high pillar unions (765 mm)
- final installation set for
- 45 984 001
- ceramic headparts 1/2", 90°
- GROHE Long-Life finish
- automatic diverter: bath/shower
- spout with mousseur
- projection 301 mm
- integrated non-return valve in shower outlet 1/2"
- hand shower Rainshower Aqua Stick (26 866)
- with shower holder
- shower hose 1250 mm 28 362
- Protected against backflow
- with cross handles
- without roughing-in set 45 984 (please order separately)
- Two different sets of caps included. One set with "H" and "C" marking, one set without marking.



25 272 GL0 ATRIO BATH/SHOWER MIXER



SPARE PARTS, ตุลาคม 2021 – now

- 1: pair of handles (Order-nr. 48406GL0)
- 2: Ceramic headpart, 1/2" (Order-nr. 45883000)
- 2.1: O-ring $\phi 18.2 \times \phi 1.7$ (Order-nr. 0392400M)
- 3: Mounting set (Order-nr. 101341GL00)
- 4: Diverter knob (Order-nr. 64989GL0)
- 5: Spout (Order-nr. 101320GL00)
- 5.1: Mousseur (Order-nr. 13926000)
- 6: Ceramic headpart, 1/2" (Order-nr. 45882000)
- 6.1: O-ring $\phi 18.2 \times \phi 1.7$ (Order-nr. 0392400M)
- 7: Diverter (Order-nr. 48407GL0)
- 8: Handshower holder (Order-nr. 101321GL00)
- 8.1: Non-return valve (Order-nr. 08565000)
- 9: Dirt strainer (Order-nr. 0700200M)