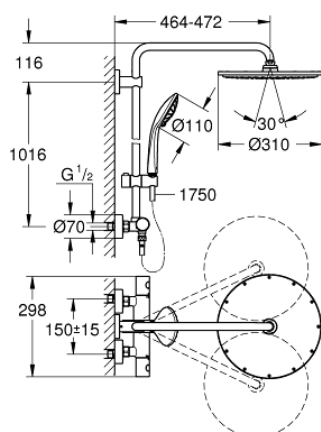
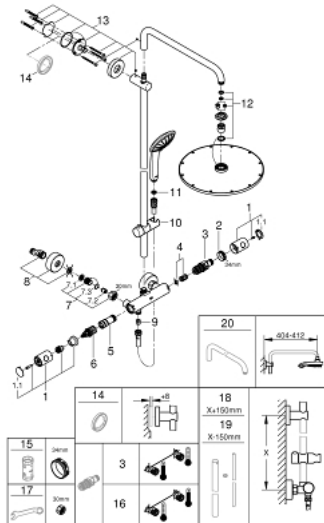


A modern, minimalist shower system with a vertical riser, a handheld showerhead, and a large overhead rain showerhead. The system is finished in a dark, matte color. The vertical riser has a sliding bar for the handheld showerhead and a horizontal bar for the water control. The handheld showerhead is circular with a grid of nozzles. The overhead rain showerhead is a large, flat, circular disc. The system is mounted on a wall.



- Colour: brushed hard graphite
- consists of:
- Horizontal swivable 450 mm shower arm
- exposed thermostat with Aquadimmer function
- allows change between:
- Rainshower Cosmopolitan 310 metal head shower
- spray pattern: Rain
- with ball joint
- angle of rotation $\pm 15^\circ$
- hand shower Euphoria 110 Massage
- 3 adjustable sprays
- Rain, Massage, SmartRain
- maximum flow rate (at 3 bar): 13.5 l/min
- adjustable in height with gliding element
- shower hose Silverflex 1750 mm 1/2" x 1/2" (28 388)
- GROHE TurboStat compact cartridge with wax thermoelement
- GROHE SafeStop at 38°C
- GROHE SafeStop Plus optional temperature limiter at 43°C included
- GROHE MetalGrip ergonomically shaped metal handles
- GROHE DreamSpray perfect spray pattern
- GROHE Long-Life finish
- GROHE SprayDimmer (Stepless flow rate reduction)
- Inner WaterGuide for a longer life
- SpeedClean anti-lime system
- TwistStop (to prevent hose from twisting)
- suitable for instantaneous heaters (min. 19 kW/h)
- minimum flow rate 5 l/min.
- optional upgrade: GROHE EasyReach tray (26 362), sold separately

26 075 AL0 EUPHORIA SYSTEM 310 SHOWER SYSTEM WITH THERMOSTATIC MIXER FOR WALL MOUNTING



SPARE PARTS, พฤศจิกายน 2016 – now

- 1: Costa metal handle 1/2" (Order-nr. 47984AL0)
- 2: Fitting ring (Order-nr. 47743000)
- 3: Thermostatic compact cartridge 1/2" (Order-nr. 47439000)
- 4: Sound absorber (Order-nr. 47398000)
- 5: Water flow (Order-nr. 47751000)
- 6: Aquadimmer (Order-nr. 12433000)
- 7: Non-return valve (Order-nr. 47189AL0)
- 7.1: Dirt Strainer (Order-nr. 0726400M)
- 7.2: Non-return valve (Order-nr. 08565000)
- 7.3: O-ring $\phi 17 \times \phi 2$ (Order-nr. 0305500M)
- 8: S-union (Order-nr. 12662AL0)
- 9: Non-return valve (Order-nr. 08565000)
- 10: Sliding piece (Order-nr. 12140AL0)
- 11: Dirt strainer (Order-nr. 0700200M)
- 12: Inlet valve assembly (Order-nr. 45933000)
- 13: Outlet shower holder (Order-nr. 48279AL0)
- 15: Socket spanner (Order-nr. 19332000)*
- 16: GROHE TurboStat cartridge 1/2" (Order-nr. 47175000)*
- 17: Special spanner (Order-nr. 19377000)*

* Optional accessories