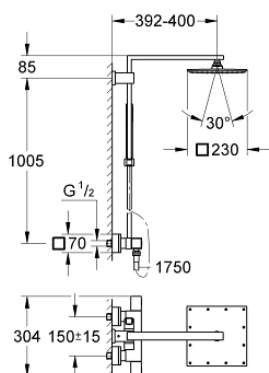


26 087 000 EUPHORIA CUBE SYSTEM 230 SHOWER SYSTEM WITH THERMOSTATIC MIXER FOR WALL MOUNTING

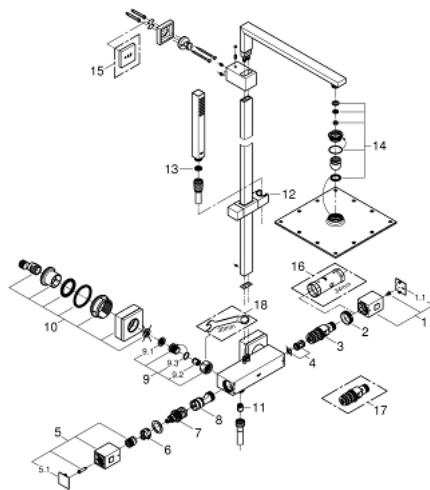


PRODUCT DESCRIPTION

- Colour: chrome
- consists of:
- shower arm
- projection 378 mm
- exposed thermostat with Aquadimmer function
- allows change between:
- Rainshower head shower (27 479 000)
- material: metal
- spray pattern: Rain
- with ball joint
- angle of rotation $\pm 15^\circ$
- hand shower Euphoria Cube (27 699 000)
- maximum flow rate (at 3 bar): 13 l/min
- adjustable in height with gliding element
- shower hose Silverflex 1750 mm 1/2" x 1/2" (28 388)
- GROHE TurboStat compact cartridge with wax thermoelement
- GROHE Water Saving - Less water, perfect flow
- GROHE SafeStop at 38°C
- GROHE SafeStop Plus optional temperature limiter at 43°C included
- GROHE DreamSpray perfect spray pattern
- GROHE Long-Life finish
- SpeedClean anti-lime system
- TwistStop (to prevent hose from twisting)
- suitable for instantaneous heaters (min. 19 kW/h)
- minimum flow rate 5 l/min.



26 087 000 EUPHORIA CUBE SYSTEM 230 SHOWER SYSTEM WITH THERMOSTATIC MIXER FOR WALL MOUNTING



SPARE PARTS, มกราคม 2013 – now

1: Temperature control handle (Order-nr. 47958000)

1.1: Cap (Order-nr. 4795900M)

2: Fitting ring (Order-nr. 47743000)

3: Thermostatic compact cartridge 1/2" (Order-nr. 47439000)

4: Sound absorber (Order-nr. 47398000)

5: Shut-off handle (Order-nr. 47960000)

5.1: Cap (Order-nr. 4795900M)

6: Stop ring (Order-nr. 47965000)

7: Aquadimmer (Order-nr. 12433000)

8: Water flow (Order-nr. 47751000)

9: Non-return valve (Order-nr. 47189000)

9.1: Dirt Strainer (Order-nr. 0726400M)

9.2: Non-return valve (Order-nr. 08565000)

9.3: O-ring $\phi 17 \times \phi 2$ (Order-nr. 0305500M)

10: S-union (Order-nr. 47824000)

11: Non-return valve (Order-nr. 08565000)

12: Sliding piece (Order-nr. 48180000)

13: Dirt strainer (Order-nr. 0700200M)

14: Inlet valve assembly (Order-nr. 45933000)

15: Compensation disc (Order-nr. 27933000)*

16: Socket spanner (Order-nr. 19332000)*

17: GROHE TurboStat cartridge 1/2" (Order-nr. 47175000)*

18: Special spanner (Order-nr. 19377000)*

* Optional accessories