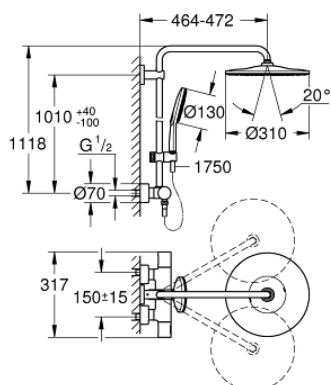


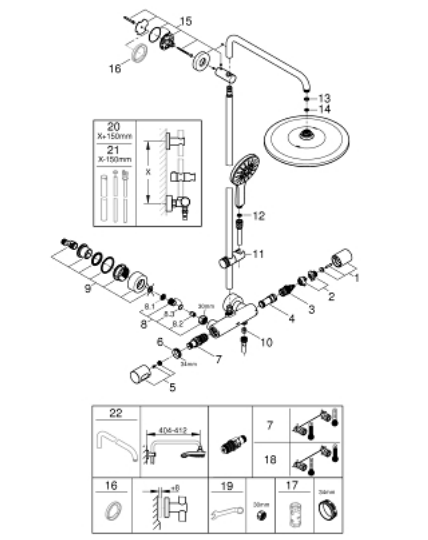
## 26 648 000 RAINSHOWER SMARTACTIVE 310 SHOWER SYSTEM WITH THERMOSTAT FOR WALL MOUNTING



### PRODUCT DESCRIPTION

- Colour: chrome
- consists of:
  - Horizontal swivable 450 mm shower arm
  - exposed thermostat with Aquadimmer function
- allows change between:
  - head shower Rainshower Mono 310
  - maximum flow rate (at 3 bar): 9.5 l/min
- with ball joint
- angle of rotation  $\pm 15^\circ$
- hand shower Rainshower SmartActive 130
- maximum flow rate (at 3 bar): 8.5 l/min
- adjustable in height with gliding element
- including performance grip
- Silverflex shower hose 1750 mm
- GROHE TurboStat compact cartridge with wax thermoelement
- GROHE Water Saving - Less water, perfect flow
- GROHE SafeStop at 38°C
- GROHE SafeStop Plus optional temperature limiter at 43°C included
- GROHE CoolTouch no risk of scalding
- GROHE DreamSpray perfect spray pattern
- GROHE SmartTip showering spray selection via push of a ring
- GROHE Long-Life finish
- GROHE FastFixation upper bracket adjustable
- SpeedClean anti-lime system
- suitable for instantaneous heaters (min. 19 kW/h)
- minimum flow rate 7 l/min.

## 26 648 000 RAINSHOWER SMARTACTIVE 310 SHOWER SYSTEM WITH THERMOSTAT FOR WALL MOUNTING



### SPARE PARTS, สิงหาคม 2018 – มีนาคม 2021

- 1: Aquadimmer handle (Order-nr. 47804000)
- 2: Temperature limiter (Order-nr. 47723000)
- 3: Aquadimmer (Order-nr. 47364000)
- 4: Water flow (Order-nr. 47887000)
- 5: Scale handle (Order-nr. 47811000)
- 6: Fitting ring (Order-nr. 47743000)
- 7: Thermostatic compact cartridge 1/2" (Order-nr. 47439000)
- 8: Non-return valve (Order-nr. 47189000)
- 8.1: Dirt Strainer (Order-nr. 0726400M)
- 8.2: Non-return valve (Order-nr. 08565000)
- 8.3: O-ring  $\phi 17 \times \phi 2$  (Order-nr. 0305500M)
- 9: S-union (Order-nr. 12693000)
- 10: Non-return valve (Order-nr. 08565000)
- 11: Sliding piece (Order-nr. 48424000)
- 12: Dirt strainer (Order-nr. 0700200M)
- 13: Fibre seal dia. 12x2 mm (Order-nr. 0138900M)
- 14: Dirt strainer (Order-nr. 48007000)
- 15: Outlet shower holder (Order-nr. 48279000)
- 16: Compensation disc (Order-nr. 27180000)\*
- 17: Socket spanner (Order-nr. 19332000)\*
- 18: GROHE TurboStat cartridge 1/2" (Order-nr. 47175000)\*
- 19: Special spanner (Order-nr. 19377000)\*
- 20: Shower system pipe for retrofitting (Order-nr. 48053000)\*
- 21: Shower system pipe for retrofitting (Order-nr. 48054000)\*
- 22: Shower arm for shower systems (Order-nr. 14047000)\*

\* Optional accessories