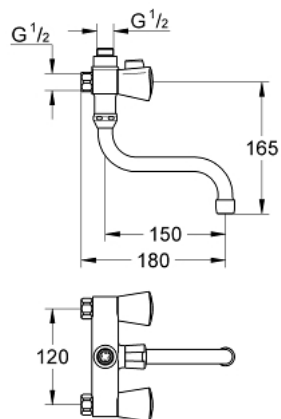


26 788 001 COSTA S SOLID BASIN MIXER

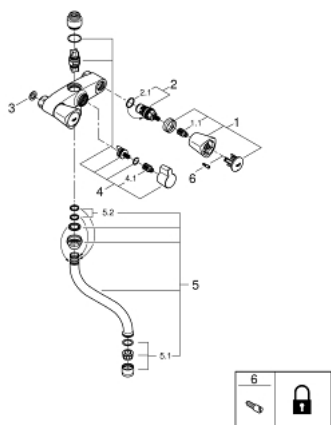


PRODUCT DESCRIPTION

- Colour: chrome
- 50 mm extension
- wall mounted
- metal handles
- heat-insulated
- screwable
- Carbodur headpart
- diverter:
- without connection unions
- centre distance 120 mm
- GROHE Long-Life finish



26 788 001 COSTA S SOLID BASIN MIXER



SPARE PARTS, กุมภาพันธ์ 2008 – now

- 1: Handle (Order-nr. 45995000)
- 1.1: Repl. kit f.handle fastening (Order-nr. 0538600M)
- 2: Headpart ceramic (Order-nr. 45142000)
- 2.1: O-ring $\phi 18.2 \times \phi 1.7$ (Order-nr. 0392400M)
- 3: Fibre seal dia. 12x2 mm (Order-nr. 0138900M)
- 4: Repl.kit f.rotary valve (Order-nr. 48006000)
- 4.1: Repl. kit f.handle fastening (Order-nr. 0538600M)
- 5: Swivel tube spout (Order-nr. 13005000)
- 5.1: Mousseur (Order-nr. 13928000)
- 5.2: Sealing washer (Order-nr. 0128500M)
- 6: Screw for Costa/Avina products (Order-nr. 48013000)*

* Optional accessories