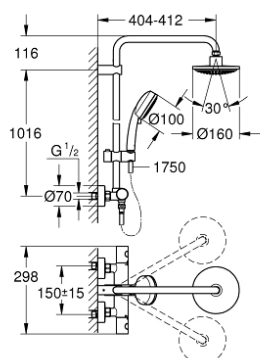


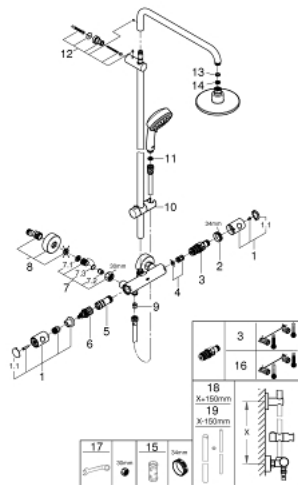
27 922 000 TEMPESTA COSMOPOLITAN 160 SHOWER SYSTEM WITH THERMOSTAT FOR WALL MOUNTING



PRODUCT DESCRIPTION

- Colour: chrome
- consists of:
 - Horizontal 45° swivable 400mm shower arm
 - exposed thermostat with Aquadimmer function
- allows change between:
 - head shower 1 spray (28 232 000)
 - spray pattern:
 - Rain
 - with ball joint
 - angle of rotation $\pm 15^\circ$
- hand shower Tempesta Cosmopolitan 100 (27 571)
- 2 adjustable sprays
 - Rain, Jet
- adjustable in height with gliding element
- shower hose Silverflex 1750 mm 1/2" x 1/2" (28 388)
- GROHE TurboStat compact cartridge with wax thermoelement
- GROHE SafeStop at 38°C
- GROHE SafeStop Plus optional temperature limiter at 43°C included
- GROHE DreamSpray perfect spray pattern
- GROHE Long-Life finish
- SpeedClean anti-lime system
- Inner WaterGuide for a longer life
- TwistStop (to prevent hose from twisting)
- suitable for instantaneous heaters (min. 19 kW/h)
- minimum flow rate 5 l/min.
- optional upgrade: GROHE EasyReach tray (26 362), sold separately

27 922 000 TEMPESTA COSMOPOLITAN 160 SHOWER SYSTEM WITH THERMOSTAT FOR WALL MOUNTING



SPARE PARTS, 1999/2018 – now

- 1: Costa metal handle 1/2" (Order-nr. 47984000)
- 1.1: Cap (Order-nr. 6458500M)
- 2: Fitting ring (Order-nr. 47743000)
- 3: Thermostatic compact cartridge 1/2" (Order-nr. 47439000)
- 4: Sound absorber (Order-nr. 47398000)
- 5: Water flow (Order-nr. 47751000)
- 6: Aquadimmer (Order-nr. 12433000)
- 7: Non-return valve (Order-nr. 47189000)
- 7.1: Dirt Strainer (Order-nr. 0726400M)
- 7.2: Non-return valve (Order-nr. 08565000)
- 7.3: O-ring $\phi 17 \times \phi 2$ (Order-nr. 0305500M)
- 8: S-union (Order-nr. 12662000)
- 9: Non-return valve (Order-nr. 08565000)
- 10: Sliding piece (Order-nr. 12140000)
- 11: Dirt strainer (Order-nr. 0700200M)
- 12: Outlet shower holder (Order-nr. 48423000)
- 13: Fibre seal dia. 12x2 mm (Order-nr. 0138900M)
- 14: Dirt strainer (Order-nr. 0676800M)
- 15: Socket spanner (Order-nr. 19332000)*
- 16: GROHE TurboStat cartridge 1/2" (Order-nr. 47175000)*
- 17: Special spanner (Order-nr. 19377000)*
- 18: Shower system pipe for retrofitting (Order-nr. 48053000)*
- 19: Shower system pipe for retrofitting (Order-nr. 48054000)*
- * Optional accessories