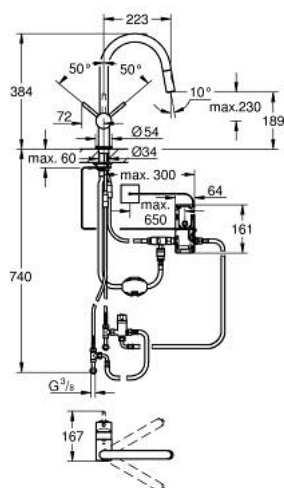


31 358 002 MINTA TOUCH ELECTRONIC SINGLE-LEVER SINK MIXER 1/2"

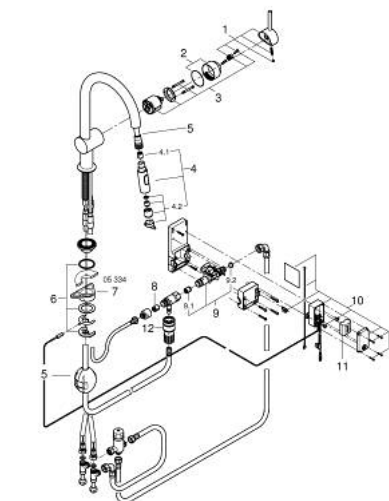


PRODUCT DESCRIPTION

- Colour: chrome
- C-spout
- single hole installation
- Touch: activation of water via skin contact
- battery power supply 6 V, lithium-battery, type CR-P2
- CE approved
- solenoid valve
- fixed value mixing valve
- automatic safety stop 60 sec.(factory pre-set)
- type of protection IP 44
- GROHE Long-Life finish
- GROHE SilkMove 46 mm ceramic cartridge
- pull-out dual spray
- diverter: laminar spray/SpeedClean shower jet
- selectable swivel area : 0° / 150° / 360°
- Protected against backflow
- flexible connection hoses
- rapid-installation-system
- maximum flow rate (at 3 bar): 9 l/min



31 358 002 MINTA TOUCH ELECTRONIC SINGLE-LEVER SINK MIXER 1/2"



SPARE PARTS, มิถุนายน 2024 – now

- 1: Lever (Order-nr. 46015000)
- 2: Shield (Order-nr. 46025000)
- 3: Cartridge (Order-nr. 46048000)
- 4: Hand shower (Order-nr. 48416000)
- 4.1: Non-return valve (Order-nr. 08565000)
- 4.2: Flow straightener (Order-nr. 48347000)
- 5: Hose for sink mixer with pull-out dual spray or mousseur (Order-nr. 48293000)
- 6: Shank mounting kit (Order-nr. 46345000)
- 7: Support plate (Order-nr. 05334000)
- 8: Non-return valve (Order-nr. 08565000)
- 9: Solenoid valve (Order-nr. 48213000)
- 9.1: Non-return valve (Order-nr. 08565000)
- 9.2: Dirt strainer (Order-nr. 42395000)
- 10: Control unit (Order-nr. 48214000)
- 11: Battery (Order-nr. 42886000)
- 12: Snap coupling (Order-nr. 46338000)