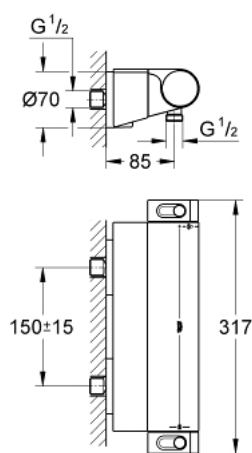


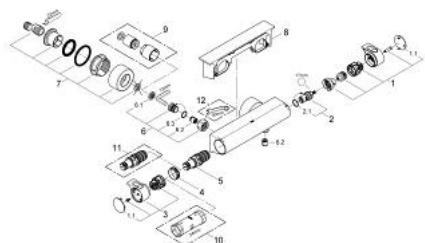
## 34 469 001 GROHTHERM 2000 THERMOSTAT SHOWER MIXER



### PRODUCT DESCRIPTION

- Colour: chrome
- wall mounted
- 100% GROHE CoolTouch consisting of safety housing + S-unions with CoolTouch escutcheons
- GROHE Long-Life finish
- GROHE Aqua Paddles, ergonomically shaped handles
- temperature scale handle with SafeStop at 38°C
- GROHE SafeStop Plus optional temperature limiter at 43°C included
- integrated mixed water shut off
- GROHE TurboStat compact cartridge with wax thermoelement
- volume handle with EcoButton (economy button with individually adjustable economy stop)
- ceramic headpart 1/2", 180°
- shower outlet below 1/2"
- built-in non return valves
- dirt strainers
- Protected against backflow
- covered S-unions, CoolTouch escutcheons with wall sealing
- GROHE EasyReach shower tray
- removable for easy cleaning
- GROHE Water Saving - Less water, perfect flow

## 34 469 001 GROHTHERM 2000 THERMOSTAT SHOWER MIXER



### SPARE PARTS, ภูมิภาคพันธ์ 2012 – now

1: Shut-off handle Aqua Paddle (Order-nr. 47916000)

1.1: Cap (Order-nr. 4788300M)

2: Ceramic headpart, 1/2" (Order-nr. 45346000)

2.1: O-ring  $\phi 18.2 \times \phi 1.7$  (Order-nr. 0392400M)

3: Temperature control handle (Order-nr. 47917000)

3.1: Cap (Order-nr. 4788300M)

4: Fitting ring (Order-nr. 47743000)

5: Thermostatic compact cartridge 1/2" (Order-nr. 47439000)

6: Non-return valve (Order-nr. 47189000)

6.1: Dirt Strainer (Order-nr. 0726400M)

6.2: Non-return valve (Order-nr. 08565000)

6.3: O-ring  $\phi 17 \times \phi 2$  (Order-nr. 0305500M)

7: S-union (Order-nr. 12693000)

8: GROHE EasyReach shower tray (Order-nr. 18608001)

9: Extension set 1/2", 30 mm (Order-nr. 46238000)\*

10: Socket spanner (Order-nr. 19332000)\*

11: GROHE TurboStat cartridge 1/2" (Order-nr. 47175000)\*

12: Special spanner (Order-nr. 19377000)\*

\* Optional accessories