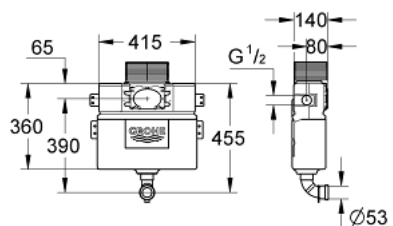


## 38 422 000 FLUSHING CISTERN FOR WC

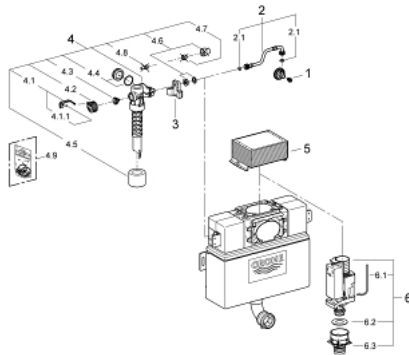


### PRODUCT DESCRIPTION

- 6 - 9 l adjustable
- concealed installation
- 0.82 m installation height
- dual flush discharge valve, pneumatic
- front or top actuation
- water supply from left/right or top
- low noise (group I acc. to German Noise Specification)
- insulated against condensation
- 415 x 140 x 360 mm
- 1/2" water supply connection
- fixing brackets
- flush pipe
- inspection shaft with protecting block
- without wall plate/actuation
- GROHE Water Saving - Less water, perfect flow
- for mounting of small flush plates please order revision shaft 40 950 000 (sold separately)



## 38 422 000 FLUSHING CISTERN FOR WC



### SPARE PARTS, กรกฎาคม 2013 – now

- 1: Headpart (Order-nr. 42385000)
- 2: Overflow Sleeve (Order-nr. 43325000)
- 2.1: Seat washer (Order-nr. 0319100M)
- 3: Support device (Order-nr. 42195000)
- 4: Filling valve (Order-nr. 37095000)
- 4.1: Lever (Order-nr. 43734000)
- 4.1.1: Ball seal dia. 9x6.8 mm (Order-nr. 4377000M)
- 4.2: Valve head (Order-nr. 43536000)
- 4.3: Membrane (Order-nr. 4375800M)
- 4.4: Screw cap (Order-nr. 43735000)
- 4.5: Valve float, 5 pcs. (Order-nr. 4379100M)
- 4.6: Repl. kit f. seal (Order-nr. 43722000)\*
- 5: inspection shaft.for flushing cistern (Order-nr. 42326000)
- 6: Discharge valve AV1 complete (Order-nr. 42314000)
- 6.1: pneumatic hose (Order-nr. 42319000)
- 6.2: Ball seal dia. 9x6.8 mm (Order-nr. 42310000)
- 6.3: Valve seat for GD2 (Order-nr. 42315000)
- \* Optional accessories