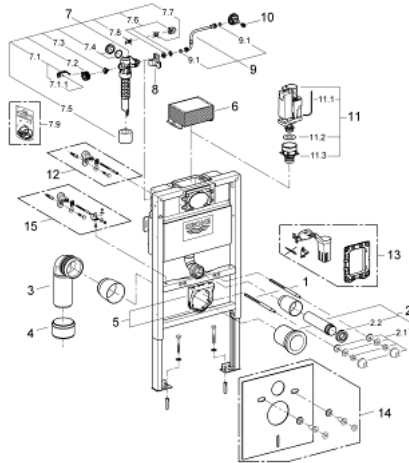


## 38 526 000 RAPID SL ELEMENT FOR WC, 0.82 M INSTALLATION HEIGHT



### SPARE PARTS, ธันวาคม 2012 – now

- 1: Threaded bolt (Order-nr. 4276400M)
  - 2: WC inlet and outlet connecting set (Order-nr. 37311K00)
  - 2.1: Basin fastening (Order-nr. 43511SH0)
  - 2.2: Connector (Order-nr. 37119000)
  - 3: PP-outlet bend Ø 90 mm (Order-nr. 42327000)
  - 4: 4" Outlet Adaptor F Rapid SI (Order-nr. 42242000)
  - 5: Support for outlet bend (Order-nr. 42243000)
  - 6: inspection shaft.for flushing cistern (Order-nr. 42326000)
  - 7: Filling valve (Order-nr. 37095000)
  - 7.1: Lever (Order-nr. 43734000)
  - 7.1.1: Ball seal dia. 9x6.8 mm (Order-nr. 4377000M)
  - 7.2: Valve head (Order-nr. 43536000)
  - 7.3: Membrane (Order-nr. 4375800M)
  - 7.4: Screw cap (Order-nr. 43735000)
  - 7.5: Valve float, 5 pcs. (Order-nr. 4379100M)
  - 7.6: Repl. kit f. seal (Order-nr. 43722000)\*
  - 8: Support device (Order-nr. 42195000)
  - 9: Overflow Sleeve (Order-nr. 43325000)
  - 9.1: Seat washer (Order-nr. 0319100M)
  - 10: Headpart (Order-nr. 42385000)
  - 11: Discharge valve AV1 complete (Order-nr. 42314000)
  - 11.1: pneumatic hose (Order-nr. 42319000)
  - 11.2: Ball seal dia. 9x6.8 mm (Order-nr. 42310000)
  - 11.3: Valve seat for GD2 (Order-nr. 42315000)
  - 12: Wall union (Order-nr. 3855800M)\*
  - 13: Retro-fit set (Order-nr. 38796000)\*
  - 14: Set for noise protection (Order-nr. 37131000)\*
  - 15: Xtra wall brackets, flexible placing (Order-nr. 38733000)\*
- \* Optional accessories