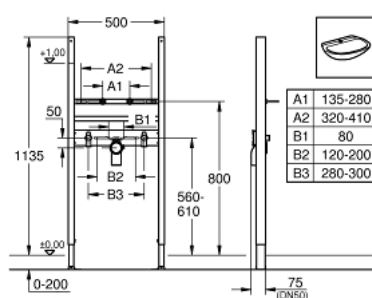


38 731 000 RAPID SL PROJECT ELEMENT FOR WASH BASIN, SINGLE HOLE INSTALLATION



PRODUCT DESCRIPTION

- 1.13 m installation height
- for on-the-wall installations or studded walls
- powder coated steel frame, self-supporting
- for dry-cladding, completely pre-assembled
- with fixed connections
- fixing material
- wash basin fixing bolts M10 with fixing device for ceramic
- variable distance of fixing bolts
- HT-outlet bend DN 50
- seal Ø 32 mm
- 2 noise protected fitting connections ½"
- for on-the-wall installation please order wall brackets 38 558 00M (sold separately)



38 731 000 RAPID SL PROJECT ELEMENT FOR WASH BASIN, SINGLE HOLE INSTALLATION

SPARE PARTS, มิถุนายน 2009 – now

1: THREADED BOLT (Order-nr. 42247000)

2: Flush elbow 2" (Order-nr. 42943000)

3: Wall union (Order-nr. 3855800M)

3: Fitting connection (Order-nr. 42944000)

4: Wall union (Order-nr. 3855800M)*

* Optional accessories

