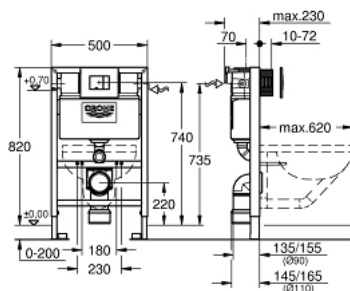


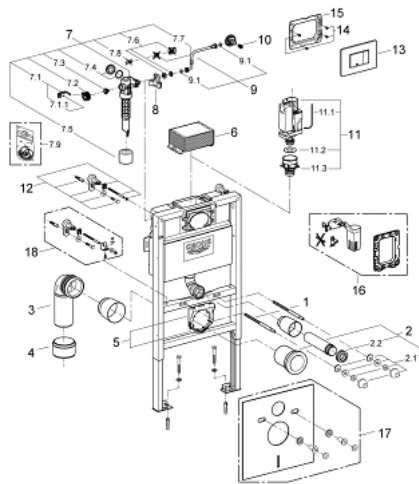
38 773 000 RAPID SL 3-IN-1 SET FOR WC, 0.82 M INSTALLATION HEIGHT

PRODUCT DESCRIPTION

- Colour: chrome
- with flushing cistern 6 - 9 l
- consists of:
 - Rapid SL element for WC (38 526 000)
 - Skate Cosmopolitan flush plate, chrome (38 732 000)
 - wall brackets (38 558 00M)



38 773 000 RAPID SL 3-IN-1 SET FOR WC, 0.82 M INSTALLATION HEIGHT



SPARE PARTS, มีนาคม 2013 – now

- 1: Threaded bolt (Order-nr. 4276400M)
 - 2: WC inlet and outlet connecting set (Order-nr. 37311K00)
 - 2.1: Basin fastening (Order-nr. 43511SH0)
 - 2.2: Connector (Order-nr. 37119000)
 - 3: PP-outlet bend Ø 90 mm (Order-nr. 42327000)
 - 4: 4" Outlet Adaptor F Rapid SI (Order-nr. 42242000)
 - 5: Support for outlet bend (Order-nr. 42243000)
 - 6: inspection shaft.for flushing cistern (Order-nr. 42326000)
 - 7: Filling valve (Order-nr. 37095000)
 - 7.1: Lever (Order-nr. 43734000)
 - 7.1.1: Ball seal dia. 9x6.8 mm (Order-nr. 4377000M)
 - 7.2: Valve head (Order-nr. 43536000)
 - 7.3: Membrane (Order-nr. 4375800M)
 - 7.4: Screw cap (Order-nr. 43735000)
 - 7.5: Valve float, 5 pcs. (Order-nr. 4379100M)
 - 7.6: Repl. kit f. seal (Order-nr. 43722000)*
 - 8: Support device (Order-nr. 42195000)
 - 9: Overflow Sleeve (Order-nr. 43325000)
 - 9.1: Seat washer (Order-nr. 0319100M)
 - 10: Headpart (Order-nr. 42385000)
 - 11: Discharge valve AV1 complete (Order-nr. 42314000)
 - 11.1: pneumatic hose (Order-nr. 42319000)
 - 11.2: Ball seal dia. 9x6.8 mm (Order-nr. 42310000)
 - 11.3: Valve seat for GD2 (Order-nr. 42315000)
 - 12: Wall union (Order-nr. 3855800M)
 - 13: top plate w. push button (Order-nr. 42371000)
 - 14: Screw dia. 4x52 mm (Order-nr. 6636200M)
 - 15: Frame (Order-nr. 43207000)
 - 16: Retro-fit set (Order-nr. 38796000)*
 - 17: Set for noise protection (Order-nr. 37131000)*
 - 18: Xtra wall brackets, flexible placing (Order-nr. 38733000)*
- * Optional accessories