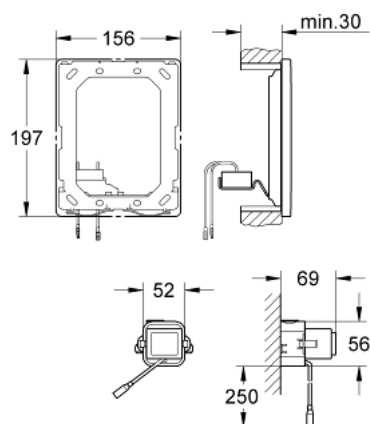


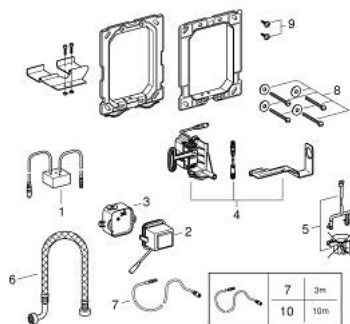
38 778 000 RADIO ELECTRONIC



PRODUCT DESCRIPTION

- for an additional wall plate for manual actuation
- for WC
- receiver modul 868.4 MHz
- for support rails for the disabled with radio transmitter of Hewi, Keuco, Lehen, Normbau, Pressalit, Deubad, RUD, Emco, FRELU, FSB, Delabie, PSA, EWAR (Wagner Ewar), TECE, RehaGrip, Sam, Hergert, Fa. Provex
- for flushing cistern GD 2
- for flushing cistern 6 l
- concealed installation
- servo motor
- with transformer 100-230 V AC, 50-60 Hz, 6 V DC
- adjustable flush volume
- adjustable flow time
- 72 h flushing can be activated
- with extension cable, 3.00 m length, for connecting transformer and electronic

38 778 000 RADIO ELECTRONIC



SPARE PARTS, พฤษภาคม 2023 – now

- 1: Wireless receiver (Order-nr. 42336000)
- 2: Transformer (Order-nr. 42278000)
- 3: Transformer connecting box (Order-nr. 42279000)
- 4: Servo motor (Order-nr. 42612000)
- 5: Pop-up rod for servo motor (Order-nr. 43306000)
- 6: Hose (Order-nr. 43307000)
- 7: Extension cable (Order-nr. 36221000)
- 8: Fixing set (Order-nr. 4308500M)
- 9: Screw dia. 4x52 mm (Order-nr. 6636200M)
- 10: Extension cable (Order-nr. 36222000)*

* Optional accessories